

BRIEFING NOTES FOR P381, P159, L1757

Pay careful attention to page T4, T1.1 Tender notice and invitation to tender as the most important information is highlighted there.

Pay special attention to all the pages that contain this heading –

Failure to complete, sign and date this form or failure to acknowledge receipt of each Addendum issued or failure to return with the quotation submission a complete copy of each Addendum issued shall result in the quotation being considered non-responsive in terms of subclause F.3.8 of the Conditions of Tender and such a quotation shall be rejected.

If this heading is displayed and a contractor feels that it is N/A and does not sign the page, the tender will be non-responsive. The content may be marked as N/A if so applicable as is generally the case with Page T13 but the Bidder must still sign and date the required spaces as instructed. Please note initialling the bottom of the page is not seen as a signature it is simply acknowledging that the bidder has seen the page and is aware of what is in his/her document.

Page T14 must be completed in full. Pay special attention to the highlighted sections-

SUPPLIER COMPLIANCE STATUS	TAX COMPLIANCE SYSTEM PIN:	OR	CENTRAL SUPPLIER DATABASE No:	MAAA
B-BBEE STATUS LEVEL VERIFICATION CERTIFICATE	TICK APPLICABLE BOX] <input type="checkbox"/> Yes <input type="checkbox"/> No		B-BBEE STATUS LEVEL SWORN AFFIDAVIT	[TICK APPLICABLE BOX] <input type="checkbox"/> Yes <input type="checkbox"/> No
[A B-BBEE STATUS LEVEL VERIFICATION CERTIFICATE/ SWORN AFFIDAVIT (FOR EMES & QSEs) MUST BE SUBMITTED IN ORDER TO QUALIFY FOR PREFERENCE POINTS FOR B-BBEE]				
ARE YOU THE ACCREDITED REPRESENTATIVE IN SOUTH AFRICA FOR THE GOODS /SERVICES /WORKS OFFERED?	<input type="checkbox"/> Yes <input type="checkbox"/> No [IF YES ENCLOSE PROOF]		ARE YOU A FOREIGN BASED SUPPLIER FOR THE GOODS /SERVICES /WORKS OFFERED?	<input type="checkbox"/> Yes <input type="checkbox"/> No [IF YES, ANSWER PART B:3]

Are you a foreign based supplier – This answer should generally be **No** and the bottom section (**QUESTIONNAIRE TO BIDDING FOREIGN SUPPLIERS**) does not need to be completed as the contractor has already indicated that he is not a foreign based supplier.

T15 must be completed and signed thus accepting the terms for bidding.

SBD 4, 8 and 9 are extremely important and failing to answer all the questions as required also lead to a bidder’s offer being non-responsive. This has occurred on numerous occasions.

SBD 6.1 Note 6.1 must be completed to claim BBBEE Points. It should be completed as follows:
B-BBEE Status Level of Contributor: 1 (As the BBBEE level the bidder’s certificate or affidavit grants)
= ...20 (Correlating points to level – see table 4.1) (maximum of 20 points)

SBD 6.2 is not applicable to this Contract as there is no imported items.

Returnable D - page T35, Generally the simplest and most frequent submission is a Sworn Affidavit. It should be noted that an affidavit must be an original that is certified by a commissioner of oaths. If a copy is submitted the contractor will not be awarded any preferential points and therefore lose out on 20 points. On the Affidavit one question is regarding the financial year for which the affidavit is done. This must be the latest financial year and not older than 12 months from date of closing of the bid, but also this time cannot be in the future, e.g. February 2022. All provisions for disclosing information under Oath must be complied with to ensure the affidavit is acceptable. For BBBEE certificate – these must be submitted as a copy – no need of certification.

Returnable E - page T36 must be completed and signed by all members/directors. If one of the members/directors fails to sign it is seen as a non-responsive document due to the directors/members not being aware of the tender submission. Also ensure that the specimen signature does appear on the resolution letter of the company owners attached to this returnable.

Returnable G - page T38 must be completed and have CV's attached as is indicated at the top of the Page. G2 has been redacted and it is not necessary to complete this section.

Returnable J - page T43 Must be signed, dated and completed as indicated on the bottom of page T44. Please follow the instructions on page T43 on how to calculate the minimum labour percentage and note that the specified minimum labour percentage is 4% as indicated. While tendering below the minimum is no longer a disqualification criterion, a penalty would apply to the bid if awarded for not achieving the minimum target.

Returnable K - page T45 Must be completed correctly and signed. This should be read and completed accordingly. Question 3 has three sub headings. Generally, the contractor will answer yes to only one of these. The corresponding number in question 4 must then also be completed. Example – If 3(a) is answered yes then the contractor must answer 4(a) as well, If 3(b) then 4(b) etc

Page C3 as the form of offer must be signed and the amount in words must be completed failure to do this will invalidate the tender.

Please check that the amount on C3(For of Offer) and C39(BOQ Summary) match.

On a contractual note the following must be mentioned:

The construction period is 9 months and failure to complete the project within the specified timeframe will result in penalties. It is of extreme importance that these risks be factored into the pricing of the documents as the bidders' price is also compared to realistic market value of the works that has been assessed by a third party to guide if the quoted price is reasonable.

C4.1 LOCALITY PLAN

Main Road 381 is located to the far East of the New Hanover area. Access to this road can be achieved by travelling on P6-1 from Copesville for approximately 26.5 KM before turning onto P156-1. Once one joins P156-1, one will need to travel approximately 13.5 KM before the turning onto P278. Once on P278 travel for another 22.5 KM and one will reach the P381 turn off. The location of the road can be seen in figure C4.1.

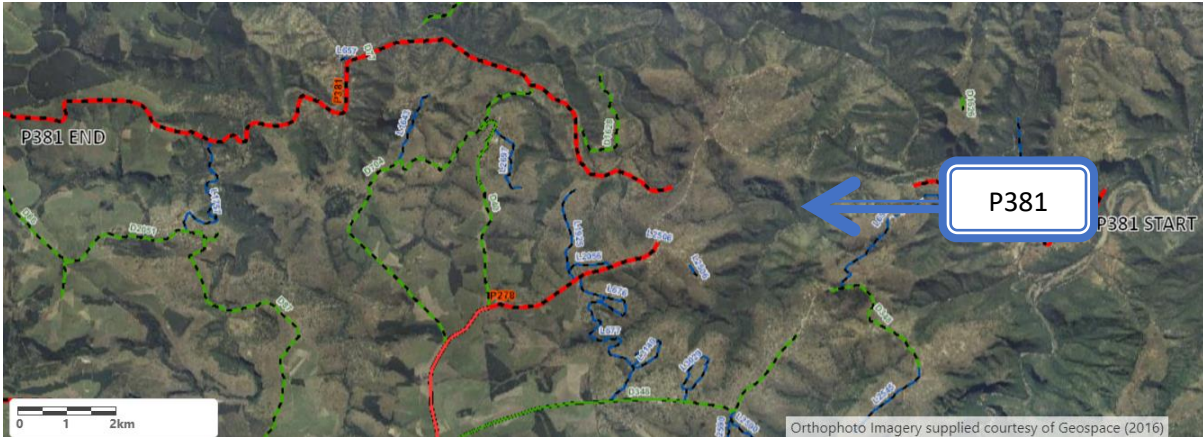


Figure C4.1 – Locality Plan of P381

The approximate limits of construction can be seen in **Table C4.1**.

Table C4.1 – Approximate Start and End co-ordinates of P381

<u>Km</u>	<u>Latitude</u>	<u>Longitude</u>
P381 Km 17.00	29,23668°S	30,79342°E
P381 Km 21.00	29,21502°S	30,76939°E

PROJECT BACKGROUND

WARD: 3

TRIBAL COUNCIL: Inadi Traditional Council

FACILITIES AND SERVICES ALONG THE ROAD: Dwellings, Schools, Clinic

TERRAIN: Mountainous

CONDITION OF THE CURRENT GRAVEL ON THE ROAD: LOSS OF GRAVEL MATERIAL AND SCOUR ON THE LHS

ROUTE TO THE QUARRY : take D704 the quarry is on D704 at km 9

Average distance to the quarry is 4km.

Please see the photos below for some images of the roads condition and the borrow pit.

Quarry for P381



Road conditions on P381



Main Road 159 is located to the far East of the New Hannover area. Access to this road can be achieved by travelling on P6-1 from Copesville for approximately 26.5 KM before turning onto P156-1. Once one joins P156-1, one will need to travel approximately 16.5 KM before the road joins P63. Once on P63 travel for another 3 KM and one will reach the P159 turn off. The location of the road can be seen in figure C4.2.

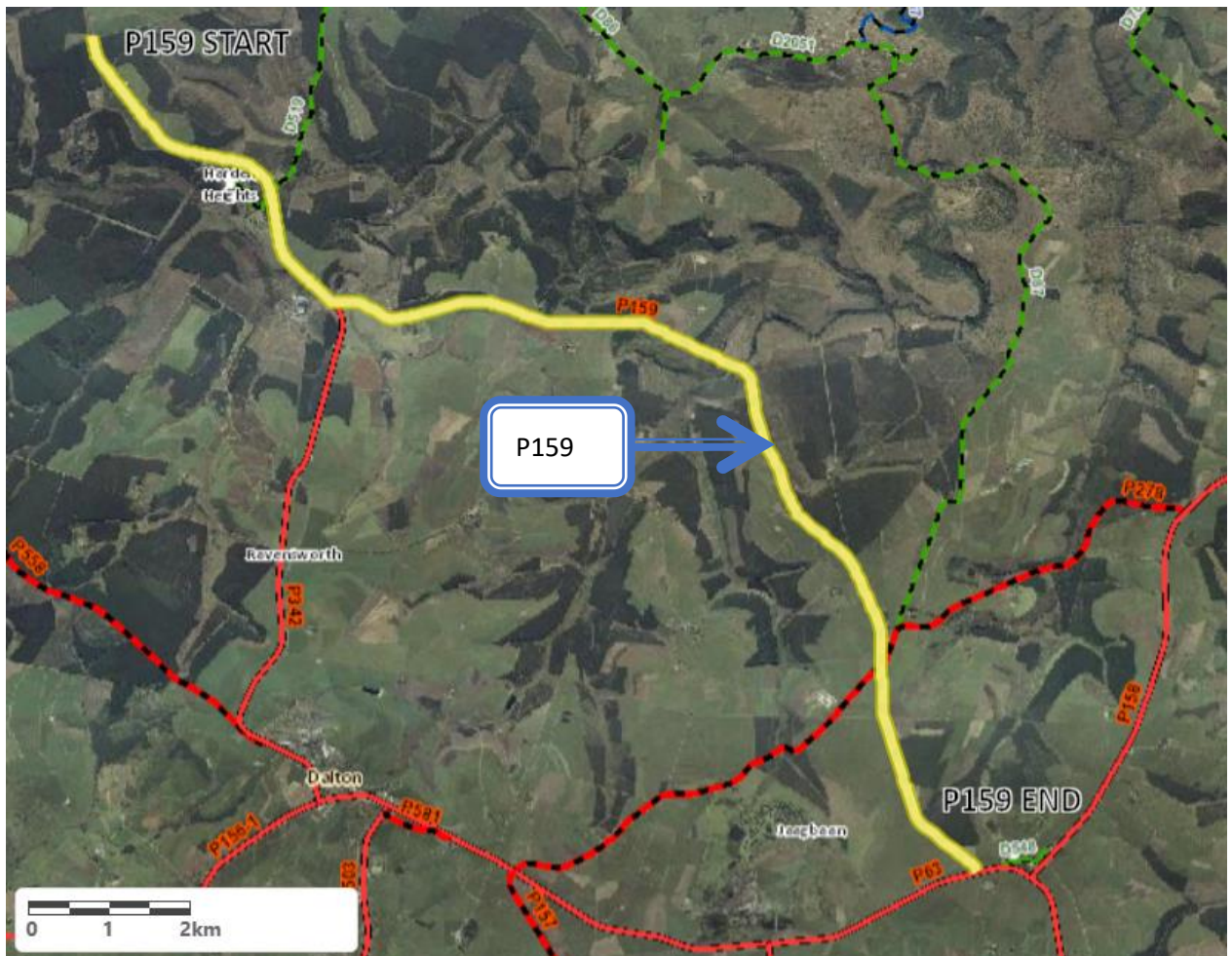


Figure C4.2 – Locality Plan of P159

The approximate limits of construction can be seen in Table C4.2.

Table C4.2 – Approximate Start and End co-ordinates of P159

Km	Latitude	Longitude
P159 Km 11.00	29,28453°S	30,67244°E
P159 Km 13.00	29,29572°S	30,68671°E

PROJECT BACKGROUND

WARD: 14

TRIBAL COUNCIL: None

FACILITIES AND SERVICES ALONG THE ROAD: FARMS

TERRAIN: Flat

CONDITION OF THE CURRENT GRAVEL ON THE ROAD: LOSS OF GRAVEL MATERIAL AND SCOUR

**ROUTE TO THE QUARRY : Procced with P159 at km take Main Road P278 procced and once you reach km15 take D704 and the quarry is at km5.5
Average distance to quarry is 20km.....**

Please see the photos below for some images of the roads condition and the borrow pit.

Road conditions on P159



Quarry for P159



Local Road 1757 is located to the far East of the New Hannover area. Access to this road can be achieved by travelling on P6-1 from Copesville for approximately 26.5 KM before turning onto P156-1. Once one joins P156-1, one will need to travel approximately 13.5 KM before the turning onto P278. Once on P278 travel for another 6.5 KM and then turn onto D87 where one will travel another 11 KM. After this turn onto D2051 and travel another Kilometer before reaching L1757. The location of the road can be seen in figure C4.3.

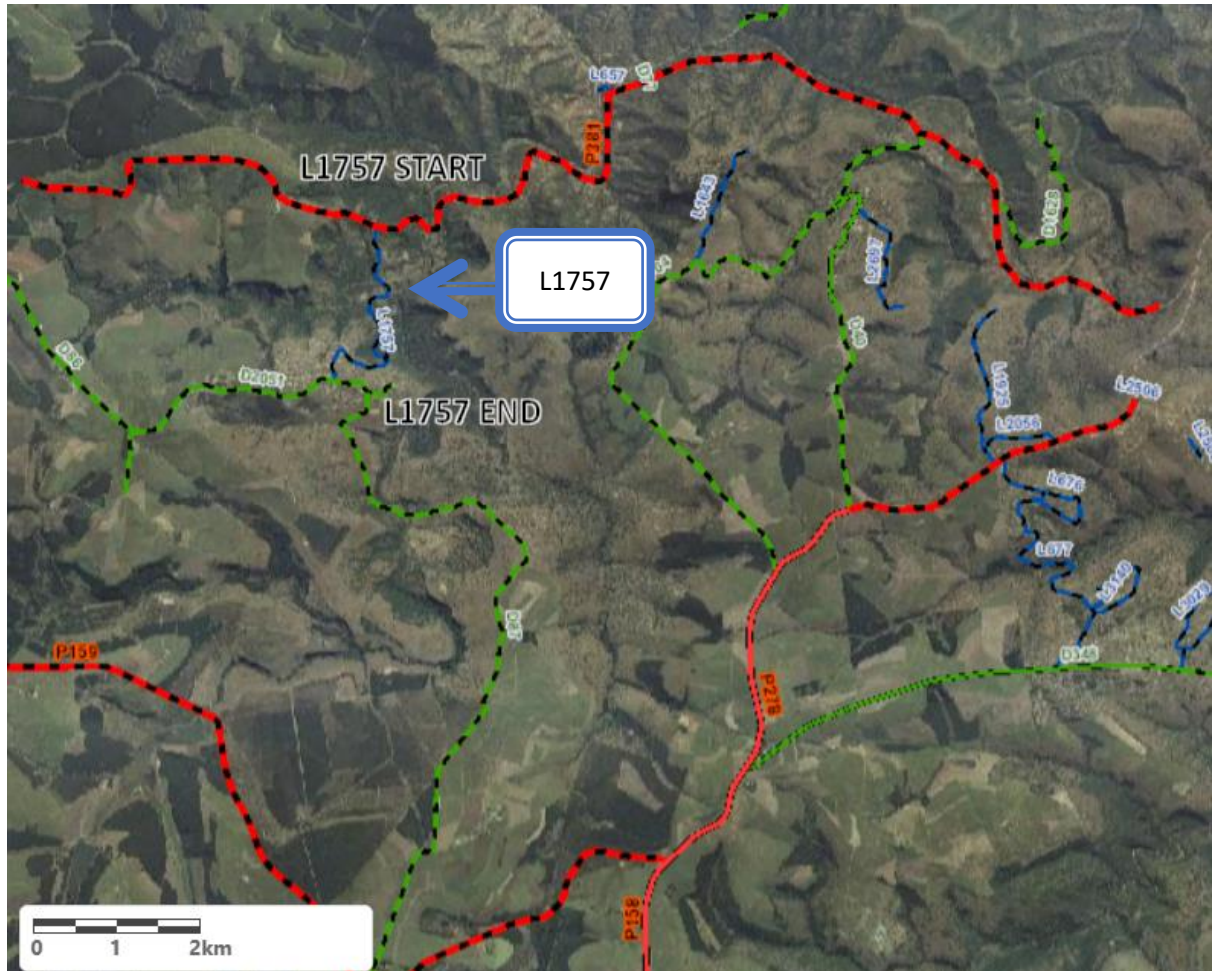


Figure C4.3 – Locality Plan of L1757

The approximate limits of construction can be seen in **Table C4.3**.

Table C4.3 – Approximate Start and End co-ordinates of L1757

Km	Latitude	Longitude
L1757 Km 1.50	29,24120°S	30,70580°E
L1757 Km 3.59	29,24881°S	30,70033°E

PROJECT BACKGROUND

WARD: 3

TRIBAL COUNCIL: Inadi Traditional Council

FACILITIES AND SERVICES ALONG THE ROAD: Dwellings, Schools, Clinic

TERRAIN: Mountainous

CONDITION OF THE CURRENT GRAVEL ON THE ROAD: LOSS OF GRAVEL MATERIAL

ROUTE TO THE QUARRY :Proceed on L1757 into Main road P381 take right on P381 and proceed at km 21 take D704 and the quarry is on km6.5.

Average distance to quarry is 13km.....

Please see the photos below for some images of the roads condition and the borrow pit.

Road conditions on L1757



Quarry on L1757

